



1 Product description

1 Product description

1.1 General

CarboSen1.000K / CarboSen10.000K is a new development for applications of small and medium size in combustion plants. The new designed housing is heat-resistant up to 200 °C and unaffected of condensing humidity. This makes this type of sensor suitable particularly for condensing boilers and devices or in flue gases of fuel cells.

This new technology provides the opportunity to integrate the sensor in the housing in a most affordable way.

1.2 CarboSen1.000 Characteristic

As the graphic below shows, CarboSen has a logarithmic, characteristic curve for the range $\lambda > 1$. This allows the detection of smaller amounts of CO_e/H_2 concentration.

If the stoichiometric Lambda is smaller than 1, i. e. the media contains less oxygen as for a complete oxidation of CO_e/H_2 is necessary, the sensor signal drops again and becomes negative in extreme cases. Beside the typic, sharp increasing edge, this falling edge of the characteristic may be used as a safety function for control strategies. The missing oxygen reference causes this falling edge, as it is known from YSZ-based sensors.

The characteristic depends on the sensor's temperature beside oxygen.

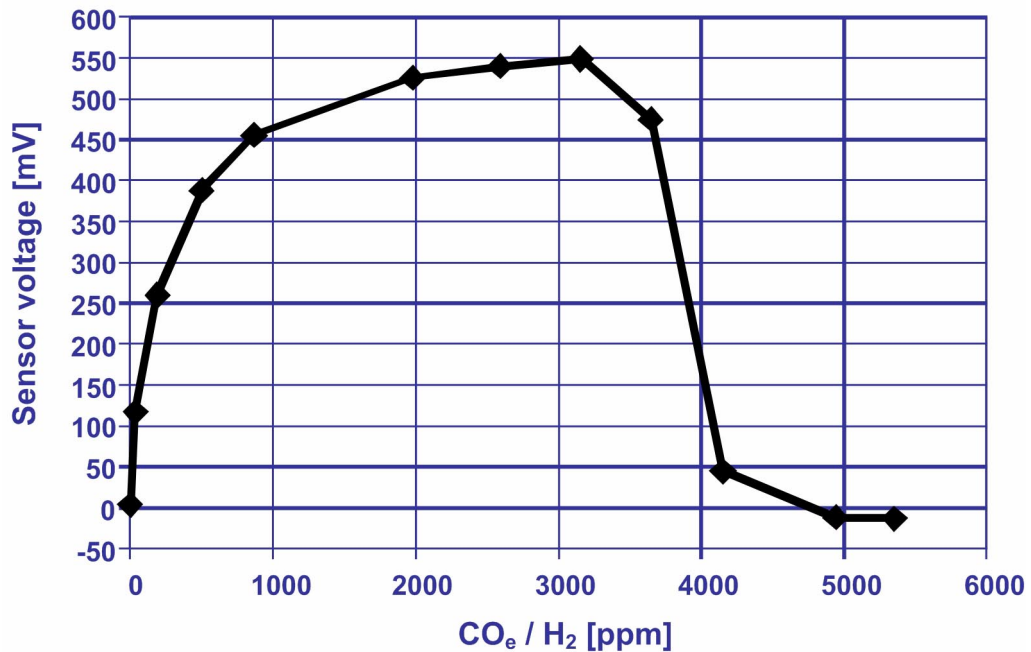


Fig. 1-1 CarboSen1.000 characteristic

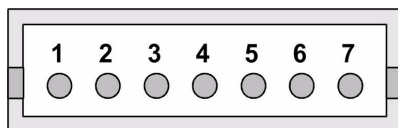
CarboSen10.000's characteristic looks similar as the above shown characteristic.

1.3 Connecting Diagram

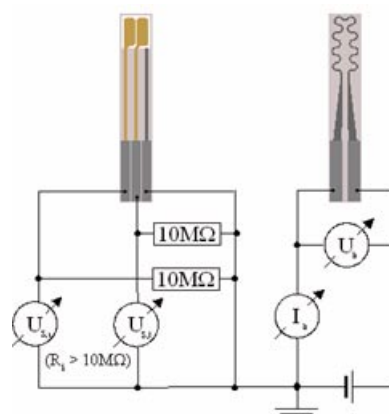
The following figures show the connecting plug's terminal assignment and the sensor's symbolic circuit. Therefore we remark that four terminals are intended for heating to provide a 4-

1 Product description

wire measurement if needed.
This is not required.



- 1 (brown) heating contact 1
- 2 (blue) heating contact 1, 4-wire
- 3 (green) heating contact 2
- 4 (pink) heating contact 2, 4-wire
- 5 (yellow) measuring electrode 1
- 6 (grey) measuring electrode 2
- 7 (white) reference electrode



1.4 Technical Data

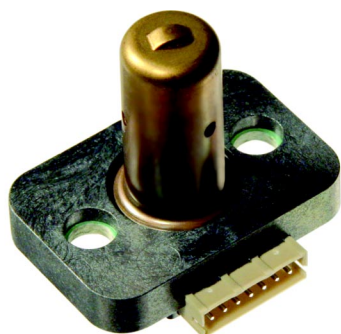


Fig. 1-2 Housing



Fig. 1-3 Sensor

| Housing | |
|-------------------|---|
| Dimensions [mm] | 28 x 22 x 29 |
| Mounting | 2 screws M4 |
| Material | Vectra /stainless steel |
| Temperature range | -20 ... +150 °C (short peaks up to 200 °C) |
| Connection | Plug-in connector, cable 7 x 0,14 mm ² |
| Sensor | |
| Measuring range | up to 3.000 ppm CO _e /H ₂ (CarboSen1.000), perfect resolution up to 1.000 ppm up to 2 % CO _e /H ₂ (CarboSen10.000), perfect resolution up to 1 % |
| Sensor voltage | -20 ... 700 V |
| Voltage tap | >10 MΩ |
| Power supply | 12 V, PWM, reverse polarity |
| Consumption | 3 W rated |

2 Ordering Information

2 Ordering Information

| Description/Type | Order no. |
|--|------------|
| CarboSen1.000K, measuring range up to 3.000 ppm CO _e /H ₂ , perfect resolution up to 1.000 ppm | 658R0050 |
| CarboSen10.000K, measuring range up to 2 % CO _e /H ₂ , perfect resolution up to 1 % | 667R1320-1 |
| Accessories/Spare Parts | |
| Connecting cable, 2m | 658P0081 |
| Sealing | 658P0084 |
| Sensor electronic | 658R0107 |
| Power pack 230 VAC – 24 VDC/1,5 A, 30 W, DIN-rail | 658R0109 |
| Programming unit for CarboSen (kit) | 658R0932 |



The information in this publication is subject to technical changes.

LAMTEC Meß- und Regeltechnik
für Feuerungen GmbH & Co. KG

Wiesenstraße 6
D-69190 Walldorf
Phone: +49 (0) 6227 / 6052-0
Fax: +49 (0) 6227 / 6052-57
e-mail: info@lamtec.de
www.lamtec.de

LAMTEC Leipzig GmbH & Co. KG

Portitzer Straße 69
D-04425 Taucha
Phone: +49 (0) 34298 / 4875-0
Fax: +49 (0) 34298 / 4875-99

Presented by:

Print no. DLT5816-13-aEN-002
Printed in Germany